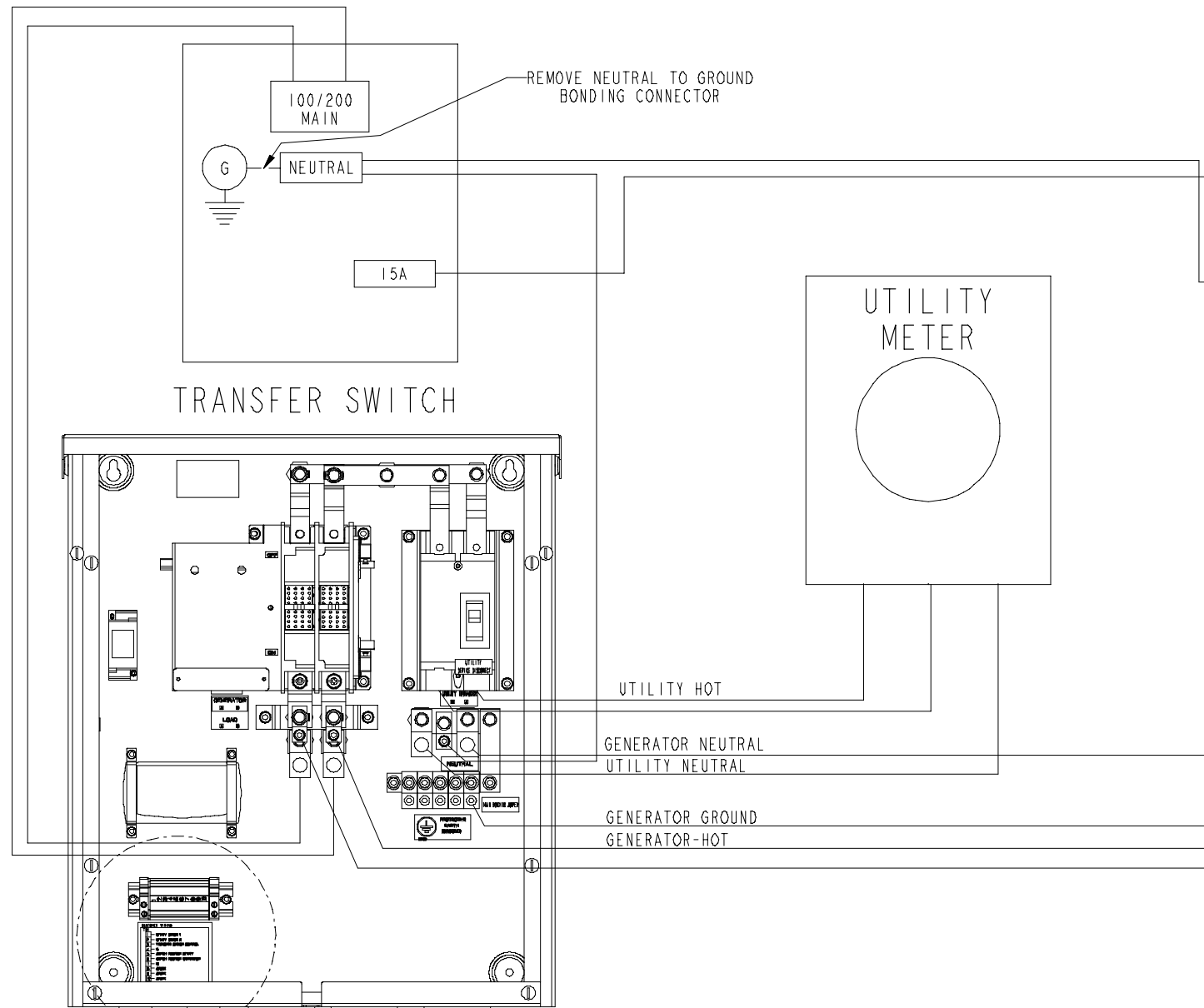


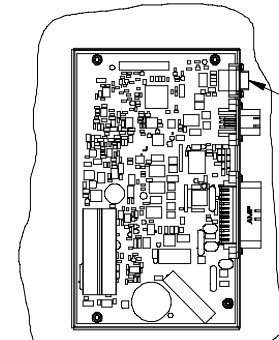
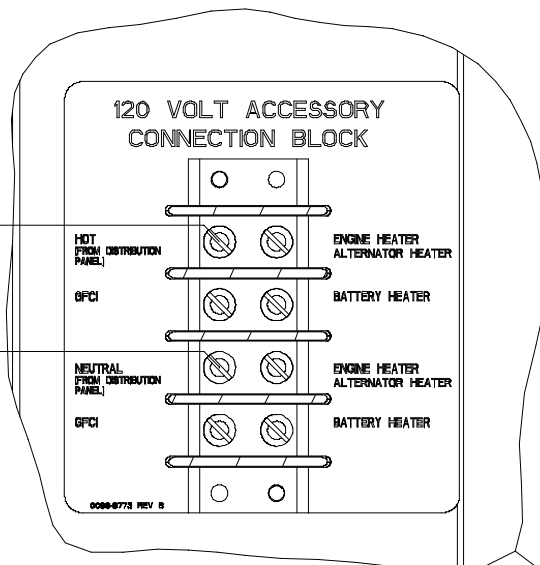
# DISTRIBUTION PANEL



# QUICK CONNECT GUIDE FOR USE WITH

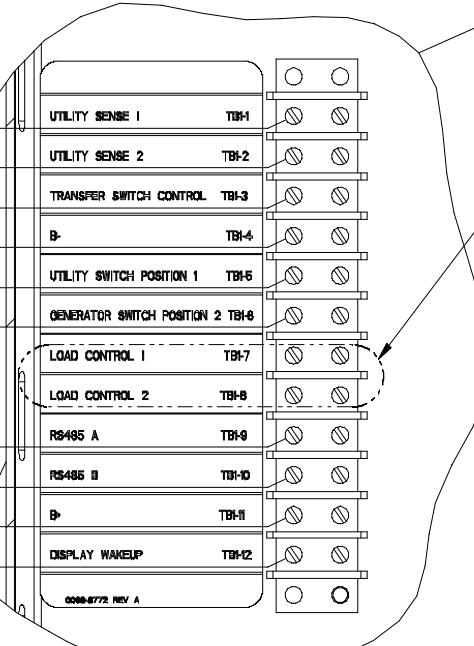
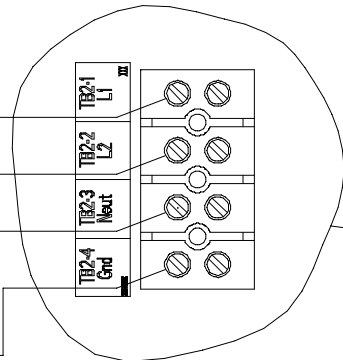
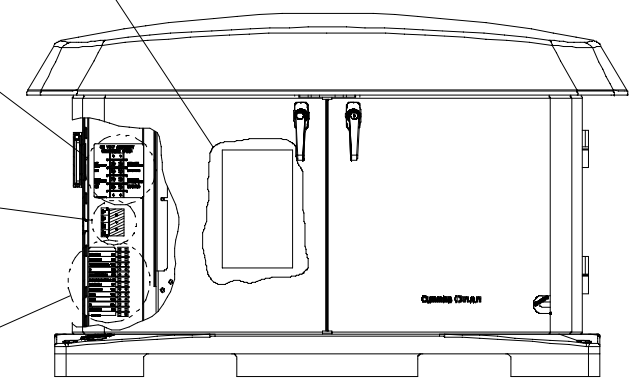
GENERATOR: 12GSAA-6707  
 AND  
 TRANSFER SWITCH: RSS100-6868  
 OR  
 RSS200-6869

NOTE: The Generator Set and Transfer Switch must be installed in accordance with the Installation Manuals that are shipped with each unit.



ETHERNET CONNECTION

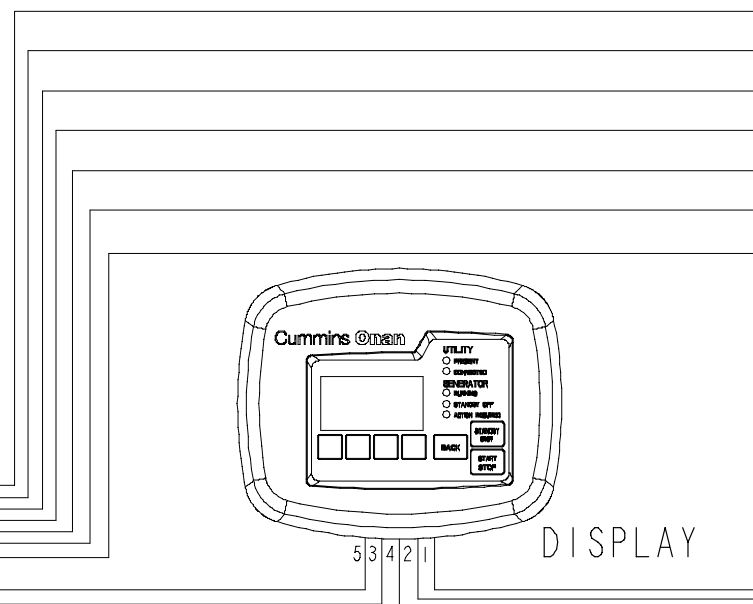
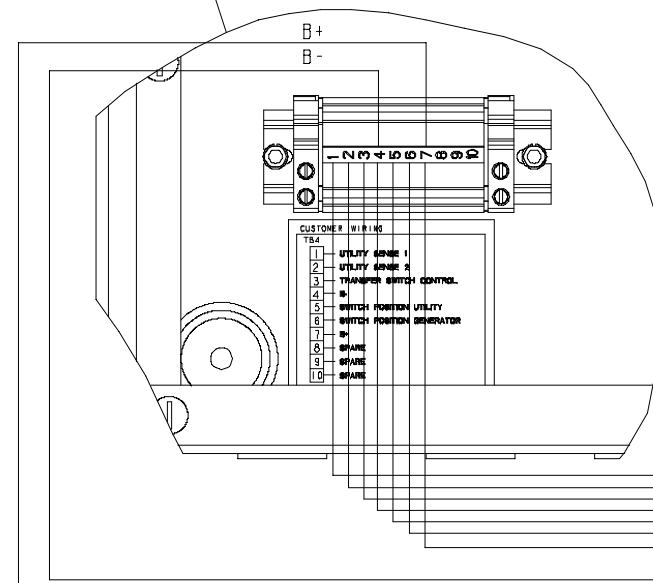
# GENERATOR



OPTIONAL LOAD MANAGEMENT RELAY CONTROL SIGNALS (B+ OUTPUTS)

MINIMUM MATERIAL REQUIRED: (SEE INSTALLATION MANUAL FOR COMPLETE MATERIAL LIST AND INSTALLATION INSTRUCTIONS)

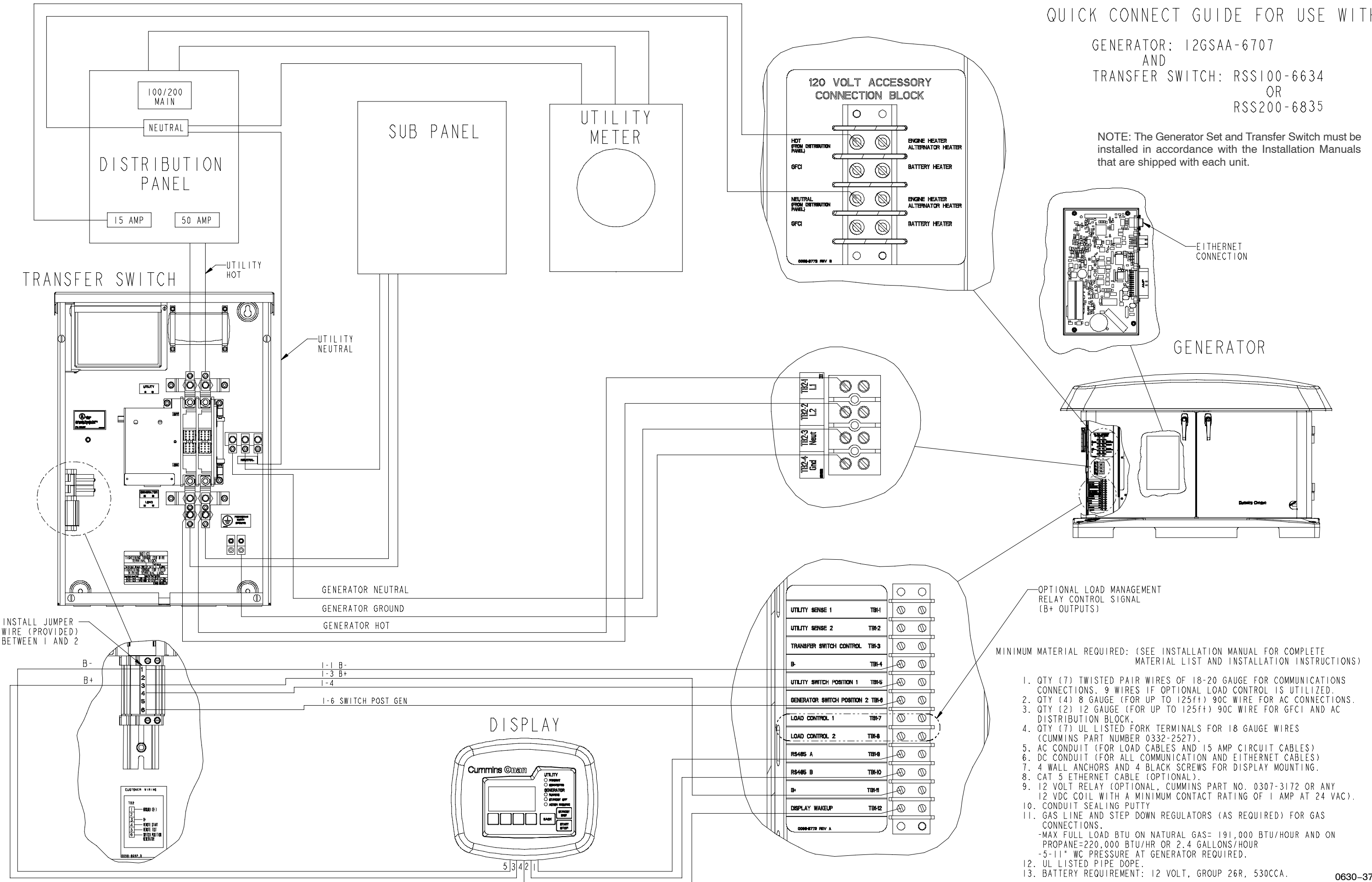
1. QTY (10) TWISTED PAIR WIRES OF 18-20 GAUGE FOR COMMUNICATIONS CONNECTIONS. 12 WIRES IF OPTIONAL LOAD CONTROL IS UTILIZED.
2. QTY (4) 8 GAUGE (FOR UP TO 125ft) 90C WIRE FOR AC CONNECTIONS.
3. QTY (2) 12 GAUGE (FOR UP TO 125 ft) 90C WIRE FOR GFCI AND AC DISTRIBUTION BLOCK.
4. QTY (10) UL LISTED FORK TERMINAL FOR 18 GAUGE WIRES (CUMMINS PART NUMBER 0332-2527).
5. AC CONDUIT (FOR LOAD CABLES AND 15 AMP CIRCUIT CABLES)
6. DC CONDUIT (FOR ALL COMMUNICATION AND ETHERNET CABLES)
7. 4 WALL ANCHORS AND 4 BLACK SCREWS FOR DISPLAY MOUNTING.
8. CAT 5 ETHERNET CABLE (OPTIONAL).
9. 12 VOLT RELAY (OPTIONAL, CUMMINS PART NO. 0307-3172 OR ANY 12 VDC COIL WITH A MINIMUM CONTACT RATING OF 1 AMP AT 24 VAC).
10. CONDUIT SEALING PUTTY.
11. GAS LINE AND STEP DOWN REGULATOR (AS REQUIRED) FOR GAS CONNECTIONS.
  - MAX FULL LOAD BTU ON NATURAL GAS= 191,000 BTU/HOUR AND ON PROPANE= 220,000 BTU/HOUR OR 2.4 GALLONS/HOUR
  - 5-11" WC PRESSURE AT GENERATOR REQUIRED.
12. UL LISTED PIPE DOPE.
13. BATTERY REQUIREMENT: 12 VOLT, GROUP 26R, 530CCA.



QUICK CONNECT GUIDE FOR USE WITH

GENERATOR: 12GSAA-6707  
 AND  
 TRANSFER SWITCH: RSS100-6634  
 OR  
 RSS200-6835

NOTE: The Generator Set and Transfer Switch must be installed in accordance with the Installation Manuals that are shipped with each unit.



INSTALL JUMPER WIRE (PROVIDED) BETWEEN 1 AND 2

OPTIONAL LOAD MANAGEMENT RELAY CONTROL SIGNAL (B+ OUTPUTS)

MINIMUM MATERIAL REQUIRED: (SEE INSTALLATION MANUAL FOR COMPLETE MATERIAL LIST AND INSTALLATION INSTRUCTIONS)

1. QTY (7) TWISTED PAIR WIRES OF 18-20 GAUGE FOR COMMUNICATIONS CONNECTIONS. 9 WIRES IF OPTIONAL LOAD CONTROL IS UTILIZED.
2. QTY (4) 8 GAUGE (FOR UP TO 125ft) 90C WIRE FOR AC CONNECTIONS.
3. QTY (2) 12 GAUGE (FOR UP TO 125ft) 90C WIRE FOR GFCI AND AC DISTRIBUTION BLOCK.
4. QTY (7) UL LISTED FORK TERMINALS FOR 18 GAUGE WIRES (CUMMINS PART NUMBER 0332-2527).
5. AC CONDUIT (FOR LOAD CABLES AND 15 AMP CIRCUIT CABLES)
6. DC CONDUIT (FOR ALL COMMUNICATION AND ETHERNET CABLES)
7. 4 WALL ANCHORS AND 4 BLACK SCREWS FOR DISPLAY MOUNTING.
8. CAT 5 ETHERNET CABLE (OPTIONAL).
9. 12 VOLT RELAY (OPTIONAL, CUMMINS PART NO. 0307-3172 OR ANY 12 VDC COIL WITH A MINIMUM CONTACT RATING OF 1 AMP AT 24 VAC).
10. CONDUIT SEALING PUTTY
11. GAS LINE AND STEP DOWN REGULATORS (AS REQUIRED) FOR GAS CONNECTIONS.  
 -MAX FULL LOAD BTU ON NATURAL GAS= 191,000 BTU/HOUR AND ON PROPANE=220,000 BTU/HR OR 2.4 GALLONS/HOUR  
 -5-11" WC PRESSURE AT GENERATOR REQUIRED.
12. UL LISTED PIPE DOPE.
13. BATTERY REQUIREMENT: 12 VOLT, GROUP 26R, 530CCA.