

**MERIDIAN**

**SEED STORAGE & HANDLING**

# SEED STORAGE & HANDLING



**MERIDIAN**

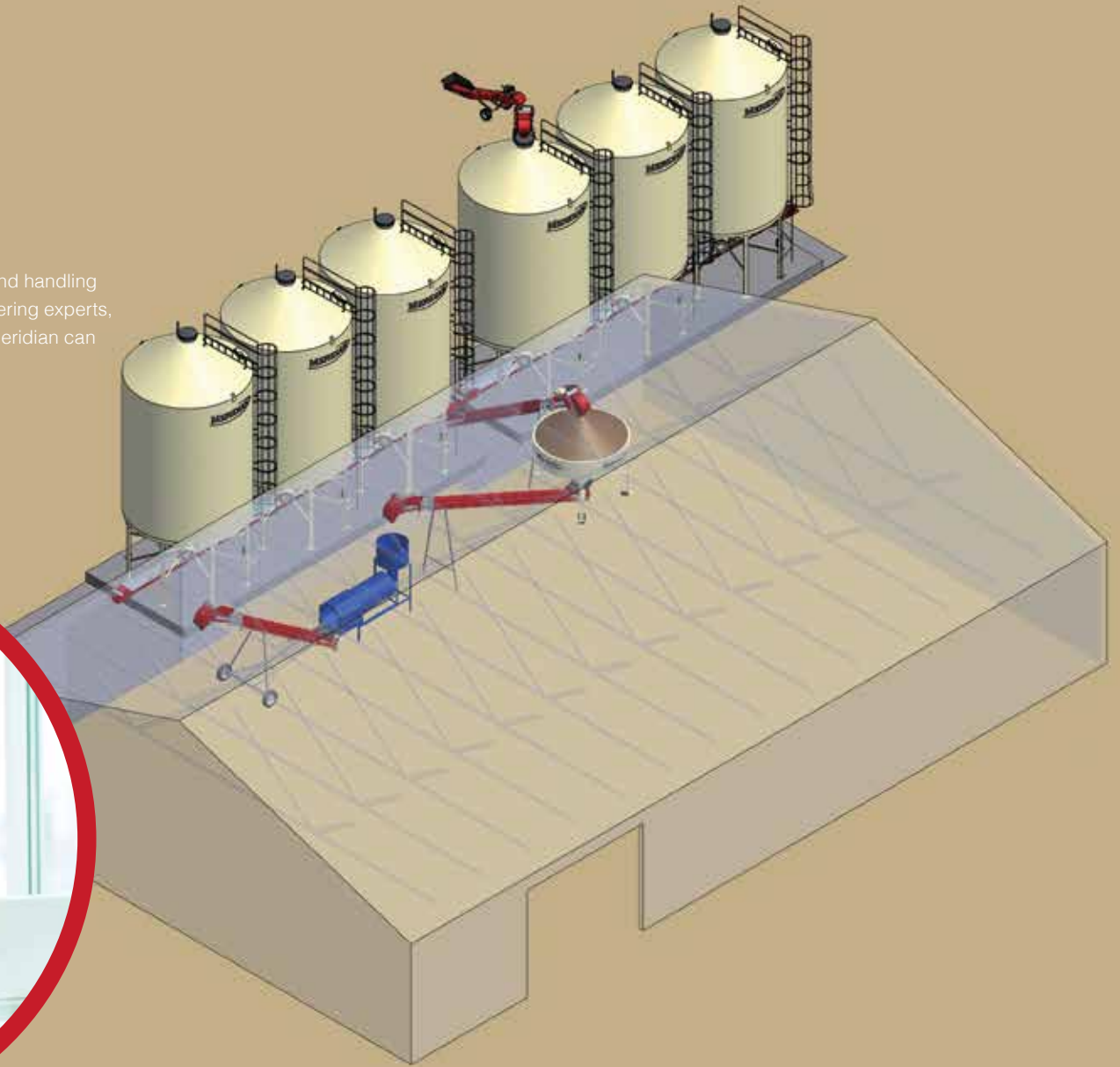


Since launching our product line over 65 years ago, Meridian sets the standard of excellence in the storage and handling industry. We continuously incorporate the latest technological innovations to meet our customers' ever-changing needs. Meticulous attention to quality and detail reflect the attitude and dedication of our highly skilled craftsmen, lending confidence to each Meridian customer of a superior and dependable product. Meridian's best references are the thousands of farmers and commercial customers who have experienced the quality and value of the Meridian family of products.

**MERIDIAN**

## Your vision. Make it happen with Meridian.

Seed site clients demand an effective integration of seed storage and handling equipment. Meridian can help. With our custom design and engineering experts, along with a wide portfolio of bins and seed handling equipment, Meridian can work with you to deliver industry leading solutions.





## Seed is Unique

Meridian understands the importance of providing our customers with reliable seed storage and handling solutions. The design and quality of your facility directly impacts seed profitability and Meridian is here to help ensure your every possible need is addressed.

# INTEGRATED SEED SITE SOLUTIONS



Seed Storage



Seed Handling



Custom Site Design

A large, white, cylindrical seed storage silo stands on a concrete pad. The silo is supported by a white metal frame with several vertical posts. Below the silo, a red metal structure, likely a conveyor or discharge system, is visible. The silo has the 'MERIDIAN' logo and 'SEEDMAX' text on its side. In the background, another similar silo and a building with a corrugated metal roof are visible under a clear blue sky.

**MERIDIAN**

SEEDMAX

**SEED STORAGE**



## **BEST CHOICE FOR SEED.**

As the leading SmoothWall hopper bin manufacturer in North America, Meridian delivers a superior product and experience. Our storage solutions are of the highest quality, dependable and proven to maintain the integrity of valuable seed products. Meridian SmoothWall bins feature a premium powder coat for long lasting durability and are available in various diameters and heights, ensuring the right size to fit your seed storage needs.

### **STANDARD FEATURES**

- ▶ Internal seed ladder
- ▶ Cone manway
- ▶ Access ladder
- ▶ 27" vented remote lid
- ▶ Roof manhole
- ▶ Three view glasses
- ▶ Rack & pinion slidegate with adjustable band clamp
- ▶ 36" clearance
- ▶ Welded seam construction
- ▶ Powder coat exterior
- ▶ Probe hole—for seed sampling
- ▶ 40 degree cone bottom.

### **OPTIONAL FEATURES**

- ▶ Electric rack & pinion slide gate
- ▶ Ladder cage packages
- ▶ Skids
- ▶ Aeration
- ▶ Air gate transitions
- ▶ Non-air gate transitions



**SEED HANDLING**



# DELIVERING SEED WITH UNMATCHED VERSATILITY



## **TRANSPORT CONVEYOR**

Our transport conveyors are manufactured with heavy-duty, fully enclosed construction and are offered in 5' length increments, starting at 20', to suit your length requirements. Meridian's Cross Cleated Belt is designed to handle your product more gently and virtually eliminates cleat "vacuum" at discharge end. Our spring loaded stainless steel tension system positioned before the discharge keeps the cross cleated belt running smooth and in place.



## **FLOOR MOUNT CONVEYOR**

Each seed site is different and often there are space constraints that can make it hard to position a floor mount conveyor. Meridian floor mount conveyors overcome this by design: our heavy duty structural frame is built right into the conveyor so you can mount the telescoping floor mount frames anywhere on the tube section and place where it's convenient. Our floor mount conveyors use a similar configuration to our transport conveyors so you get the same options and great performance.



## **UNDER BIN CONVEYOR**

Meridian quality is in the details and our under bin conveyor is an outstanding example of our attention to detail. Our standard is an 18" smooth belt that handles grain more gently, protecting its integrity. Our under bins are the most robust in the seed site industry and the only ones to include a quick release bottom panel for easy clean out and inspection. All combined, these features provide a robust, high capacity, easy to use product that simply can't be beat.



## **UNDER CAR CONVEYOR**

Unloading trucks can be a tough job. Make it easier with a Meridian under car conveyor. Gentle seed handling and ease of use were the design considerations for the under car conveyor. Our under car conveyor is very well weighted and has a handle on the discharge end to easily move it around the yard and position under the discharge of the semi-truck.



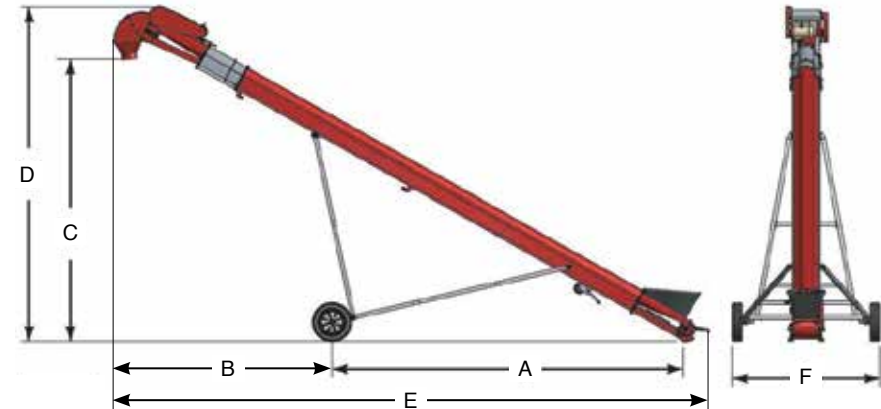
## TRANSPORT CONVEYOR.

Available in a variety of lengths from 20-75 ft. (center of roller to center of roller). Electric drive is standard but also available in hydraulic drive as special order. Other options include electric winch, anti-splash cover and 4 canvas hopper options (tall/narrow, tall/wide, short/narrow, short/wide). Easy clean out bottom is standard and is accessible via quick release latches.

### GREAT FEATURES. GREAT QUALITY.

- ▶ Meridian 2-ply 16" rubber cleated belt
- ▶ Spring loaded stainless steel tension system
- ▶ 400 feet per minute belt speed

Model	Dimension	Minimum		Maximum	
		Feet	Metres	Feet	Metres
20' AF-E-20	A	10' 1"	3.09	10' 6"	3.21
	B	7' 9"	2.36	9' 0"	2.74
	C	9' 10"	2.99	12' 2"	3.76
	D	12' 8"	3.87	14' 9"	4.51
	E	19' 8"	5.99	21' 4"	6.5
	F	8' 5" (2.57m)			
25' AF-E-25	A	13' 7"	4.45	14' 8"	4.47
	B	7' 0"	2.13	9' 3"	2.82
	C	15' 0"	2.87	10' 11"	3.33
	D	17' 8"	5.38	13' 11"	4.24
	E	23' 11"	7.29	26' 5"	8.05
	F	8' 5" (2.57m)			
30' AF-E-30	A	16' 8"	5.08	16' 3"	4.95
	B	8' 5"	2.57	12' 9"	3.89
	C	10' 8"	3.25	18' 8"	5.69
	D	13' 10"	4.22	21' 3"	6.48
	E	27' 3"	8.31	32' 0"	9.75
	F	8' 5" (2.57m)			
35' AF-E-35	A	21' 3"	6.48	18' 11"	5.77
	B	9' 11"	3.02	14' 5"	4.39
	C	9' 2"	2.79	21' 4"	6.50
	D	12' 4"	3.76	23' 11"	7.30
	E	31' 7"	9.63	37' 11"	11.56
	F	8' 5" (2.57m)			
40' AF-E-40	A	22' 8"	6.91	19' 7"	5.97
	B	12' 9"	3.89	18' 2"	5.54
	C	8' 2"	2.49	24' 8"	7.53
	D	11' 6"	3.41	27' 8"	8.43
	E	35' 3"	10.74	43' 3"	13.18
	F	8' 5" (2.57m)			
45' AF-E-45	A	25' 0"	7.62	22' 0"	6.71
	B	14' 4"	4.37	20' 5"	6.22
	C	10' 5"	3.18	27' 11"	8.52
	D	11' 4"	4.19	30' 6"	9.31
	E	38' 10"	11.84	47' 8"	14.53
	F	8' 5" (2.57m)			
55' SL-E(H)-55	A	26' 8"	8.13	30' 1"	9.17
	B	13' 2"	4.01	24' 4"	7.42
	C	10' 6"	3.20	38' 5"	11.71
	D	13' 7"	4.14	40' 11"	12.47
	E	42' 10"	13.06	51' 11"	15.82
	F	8' 5" (2.57m)			
65' SL-E(H)-65	A	29' 7"	9.02	41' 3"	12.57
	B	21' 4"	6.50	33' 4"	10.16
	C	10' 9"	3.27	46' 1"	14.05
	D	14' 0"	4.27	43' 9"	13.33
	E	50' 5"	15.37	68' 2"	20.78
	F	8' 5" (2.57m)			
75' SL-E(H)-75	A	33' 5"	10.19	33' 9"	10.29
	B	21' 3"	6.48	30' 7"	9.32
	C	10' 11"	3.33	41' 2"	12.55
	D	14' 4"	4.37	48' 8"	14.83
	E	63' 1"	19.23	78' 4"	23.88
	F	8' 5" (2.57m)			





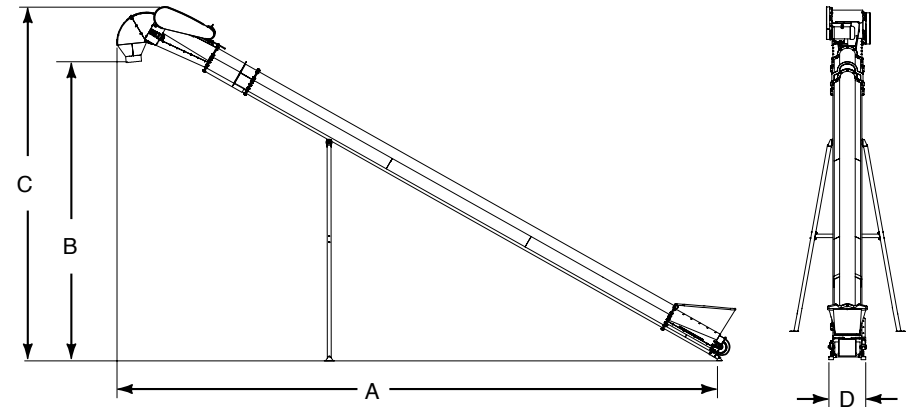
Model	Dimension	At 45° Incline	At 0° Incline
20' AF-E-20	A	17' 0" (5.18m)	22' 4" (6.81m)
	B	13' 7" (4.14m)	0
	C	16' 1" (4.90m)	3' 11" (1.19m)
	D	1' 11" (0.60m)	
25' AF-E-25	A	20' 5" (6.22m)	27' 4" (8.33m)
	B	17' 1" (5.21m)	0
	C	19' 7" (5.97m)	3' 11" (1.19m)
	D	1' 11" (0.60m)	
30' AF-E-30	A	24' 0" (7.32m)	32' 4" (9.86m)
	B	20' 7" (6.27m)	0
	C	23' 1" (7.03m)	3' 11" (1.19m)
	D	1' 11" (0.60m)	
35' AF-E-35	A	27' 7" (8.41m)	42' 4" (12.90m)
	B	24' 2" (7.37m)	0
	C	26' 5" (8.05m)	3' 11" (1.19m)
	D	1' 11" (0.60m)	
40' AF-E-40	A	31' 2" (9.5m)	42' 4" (12.90m)
	B	27' 8" (8.43m)	0
	C	30' 2" (9.20m)	3' 11" (1.19m)
	D	1' 11" (0.60m)	
45' AF-E-45	A	31' 2" (9.5m)	47' 4" (14.42m)
	B	31' 2" (9.50m)	0
	C	33' 8" (10.26m)	3' 11" (1.19m)
	D	1' 11" (0.60m)	

## FLOOR MOUNT CONVEYOR.

Available in a variety of lengths from 20-45 ft. (center of roller to center of roller). Electric drive is standard but also available in hydraulic drive as special order. Other options include anti-splash cover and 4 canvas hopper options (tall/narrow, tall/wide, short/narrow, short/wide). Easy clean out bottom is standard and is accessible via quick release latches.

### GREAT FEATURES. GREAT QUALITY.

- ▶ Easy clean out bottom
- ▶ Inline stainless steel tension system
- ▶ Multiple hopper size options
- ▶ Floor mount legs can be mounted anywhere on the tube section



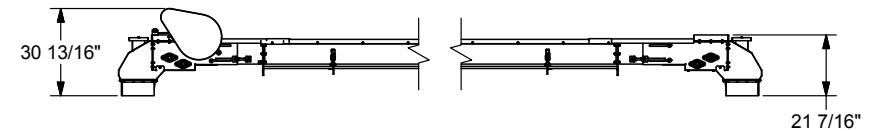
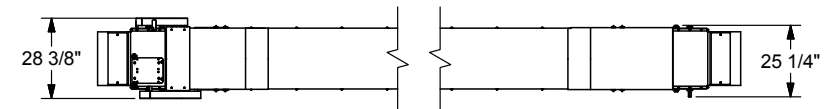


## UNDER BIN CONVEYOR.

Choose a length that works for your individual needs - our Under Bin Conveyor comes in standard sizes of 7.25 and 8.5 ft lengths. These lengths are perfectly sized to allow one foot spacing between 16ft and 14ft (13.5ft) bins. Also available are 1,2,3 and 4ft lengths to meet any requirements you may have. Meridian will configure the middle sections of the conveyor to create a custom length to specifically meet the individual needs for each seed site. Accessories such as air gates, seed box stands and Y-valve/K-valves are available as well.

### GREAT FEATURES. GREAT QUALITY.

- ▶ Mounts directly to the bins
- ▶ Optional air gates for automated systems
- ▶ Easy access - uses quick release panels to gain access for complete and easy clean out
- ▶ 18" smooth belt
- ▶ Reversible kit comes standard on all conveyors
- ▶ Heavy duty construction - built with heavier gauge materials for sturdy, robust design





Dimensions	Minimum		Maximum	
	Feet	Metres	Feet	Metres
A	8' 2"	2.49	8' 4"	2.54
B	4' 3"	1.37	4' 4"	1.32
C	2' 4"	0.71	3' 6"	1.07
D	4' 9"	1.45	5' 7"	1.70
E	2' 11" (0.89m)			

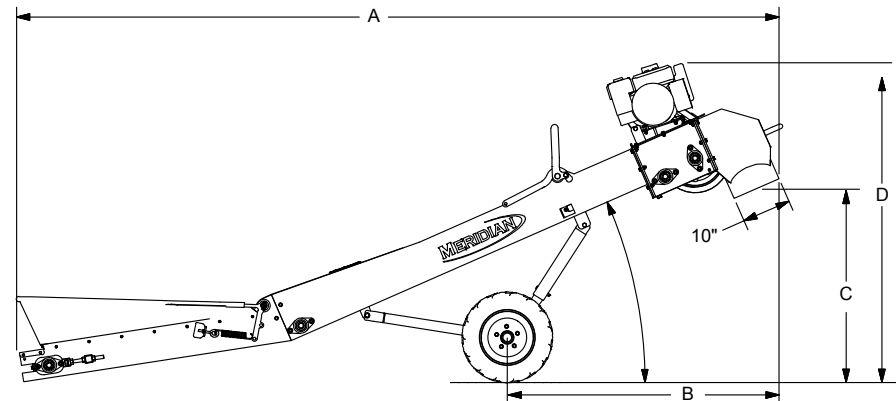
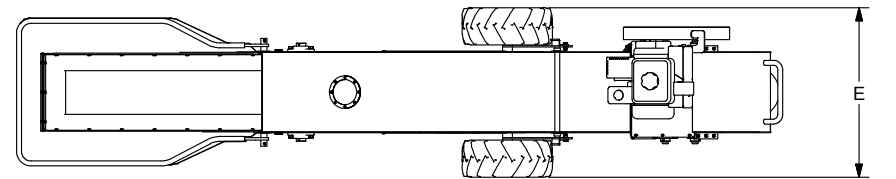
	Full Load Amps	Motor Size and Voltage	Motor Part Number
Electric Motor	15.5	3HP 1PH 220V	17848
	9.4	3HP 3PH 220V-460V	17849
	3.3	3HP 3PH 600V	17850
Gasoline Engine	-----	5HP	21255

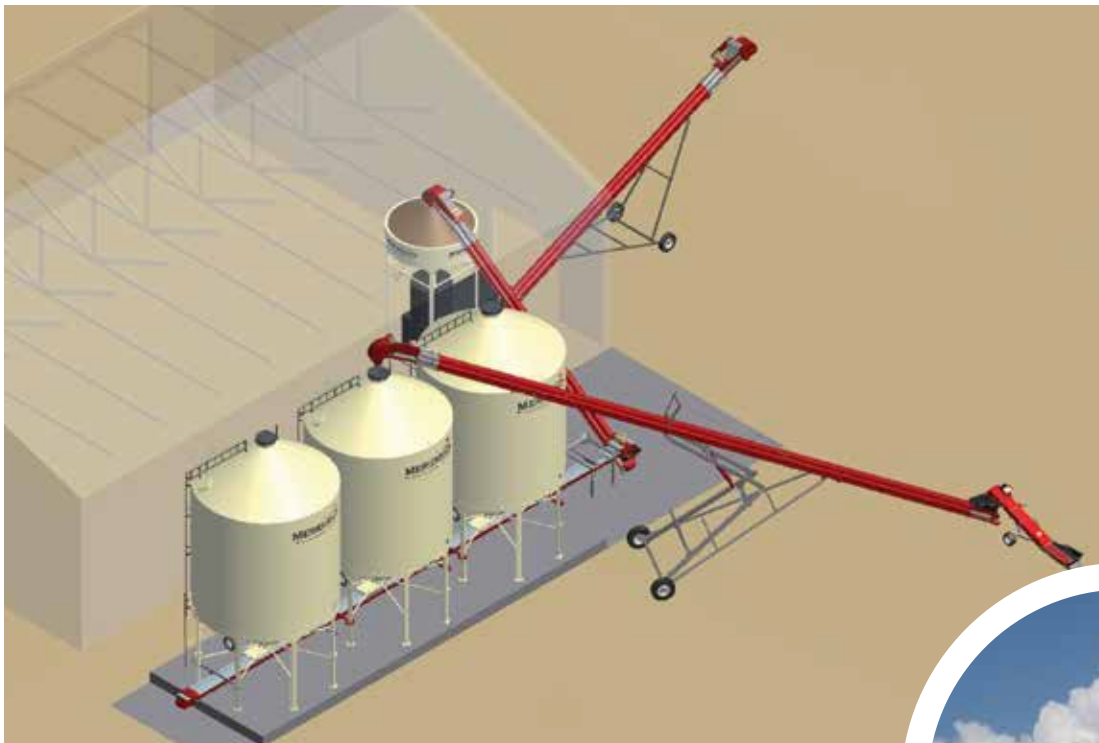
## UNDER CAR CONVEYOR.

Available in one length and standard electric drive, additional drive options include gasoline motor or hydraulic drive. Canvas hopper can be raised and lowered from a handle located to the discharge end, which allows you to position the under car and then raise the canvas prior to unloading the semi-truck.

### GREAT FEATURES. GREAT QUALITY.

- ▶ 16" crescent belt
- ▶ Hydraulic, electric or gas option
- ▶ Adjustable height option





## **CUSTOM SITE DESIGN.**

Meridian has the engineering capabilities to address the specific and unique needs of our seed site customers. In addition to our product offering, we provide important value added services to ensure success at all stages of a client project. Some of these value-added services include:

- Working with the dealer on the initial site layout
- Collaborating with the dealer to conceptualize equipment options and the ideal solution
- Supplying equipment drawings and specifications
- Provide detailed site specific cad drawings

We can tailor a product package to meet your specific needs. Regardless of the size or scope of the project, you can rest assured that Meridian is committed to your success. We have the product for your application and the expertise to assist with the various stages of development.



# SPECIFICATIONS

## SEEDMAX BINS

Standard Diameters	Bushel Capacity Ranges	Cubic Feet Ranges	Height Ranges
12'	1064 - 1448	912 - 4332	16' - 47'
13'	1533 - 4332	1813 - 5123	23' - 48'
13' - 6"	1393 - 4071	2213 - 4503	20' - 42'
14'	1826 - 3135	2146 - 3688	24' - 34'
16'	2410 - 5825	2831 - 6842	24' - 44'
18'	3161 - 7488	3714 - 8794	26' - 46'

Please note some sizes may not be available in every region depending on transportation restrictions.

## CONVEYORS AND SEEDMAX MODEL SPECIFICATIONS

SEEDMAX BINS									
Model	bushels	cu ft	bin height	min conveyor					
12' diameter	(all destinations)								
1208SM	1095	1288	20' 3/16"	35'					
1212SM	1479	1740	24' 3/16"	45'					
13' diameter	(all destinations)								
1313SM	1882	2214	26'4"	50'					
1322SM	2898	3409	35'4"	65'					
1330SM	3800	4471	43'4"	75'					
13'6" diameter	(all destinations)								
1412SM	1881	2213	25'2"	45'					
1420SM	2854	3358	33'2"	60'					
1428SM	3828	4503	41'2"	75'					
16' diameter	(excluding Ontario, Eastern & PNW U.S regions)								
1615SM	3265	3840	29'11"	55'					
1620SM	4120	4845	34'11"	65'					
1625SM	4974	5851	39'11"	75'					
18' diameter	(Western Canada and Northern US destinations only)								
1815SM	4243	4991	31'6"	55'					
1820SM	5324	6263	36'6"	65'					
1825SM	6406	7536	41'6"	75'					
CONVEYORS									
	20ft	25ft	30ft	35ft	40ft	45ft	55ft	65ft	75ft
Transport Electric Drive	.	.	.	.	.	.			
Stationary Electric Drive	.	.	.	.	.	.			
Scissor Lift Electric Drive							.	.	.

NOTES:  
 20-30 foot conveyors require 5HP motor  
 35-45 foot conveyors require 7.5HP motor  
 55-75 foot conveyors need a 10HP motor  
 Meridian also offers a hydraulic driven option on certain models





Storage and Handling | Experience the **Advantages**

SEED STORAGE & HANDLING

**For more information or to find your nearest dealer, please visit our website**

**[www.MeridianMFG.com](http://www.MeridianMFG.com)**